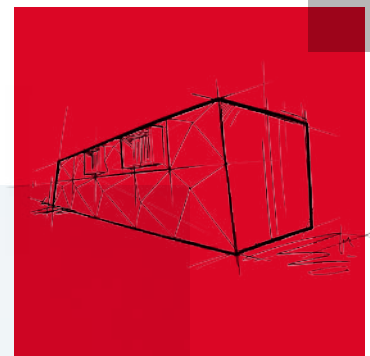


FIREPRO® FIRESTOP PIPE COLLARS

Firestop solution for plastic pipework penetrations



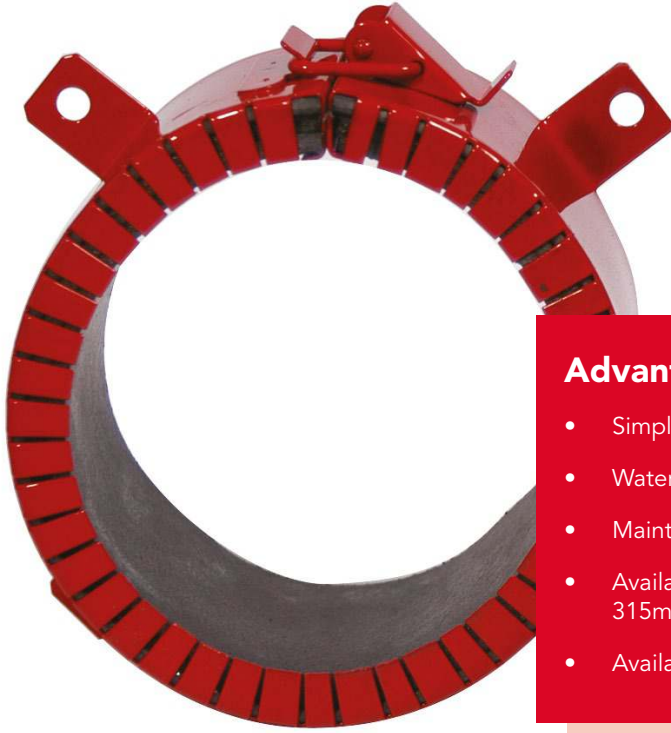
FIREPRO® FIRESTOP PIPE COLLARS

Firestop solution for plastic pipework penetrations.

ROCKWOOL Firestop Pipe Collars provide a simple and effective method of firestopping plastic pipework where it passes through fire resistant walls and floors, providing up to four hours fire protection.



The following NBS Plus clauses include
'Firestop Compound': P12-43 , P12-370, P12-380



Advantages

- Simple to install
- Water resistant
- Maintenance free
- Available to suit pipe sizes ranging from 30 to 315mm O.D.
- Available from order in 48 hours

Description

Tested to BS476 Part 20, Firestop Pipe Collars provides up to 4 hours fire protection.

Firestop Pipe Collars consist of a corrosion resistant power coated steel sleeve, containing a flexible graphite based intumescent liner manufactured to suit the pipework to be firestopped. Integral toggles are opened up and the collar is simply fitted around the plastic pipe.

The toggles are closed and the collar is pushed flush to the surface of the wall or underside of floor. The collar is then securely fastened to the structure by means of fire resistant fixings threaded through fixing tabs.

Any gaps of up to 25mm wide around the pipework should be filled with ROCKWOOL Acoustic Intumescent Sealant.

For gaps greater than 25mm wide ROCKWOOL Firestop Compound can be used. Under fire conditions the intumescent material swells filling the void left by the burnt out plastic.

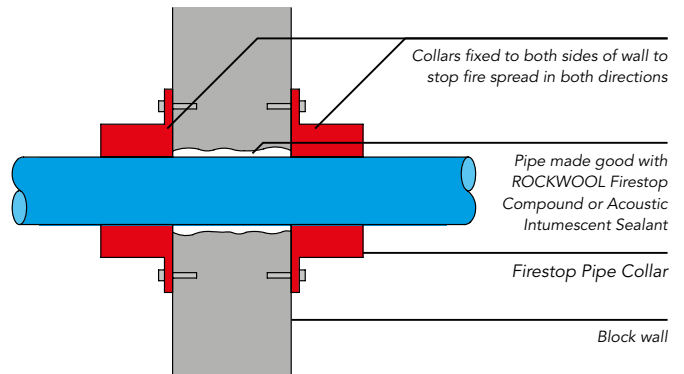


Figure 1



Figure 2

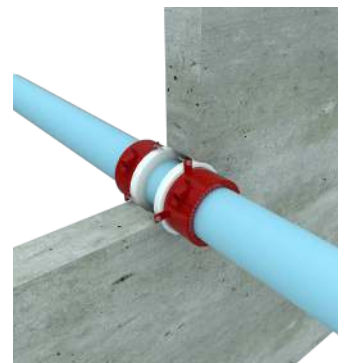


Figure 3

Specification

Install ROCKWOOL Firestop Pipe Collars to provide up to 1, 2, 3 or 4 hours fire protection to all plastic pipework, in accordance with manufacturer's instructions.

Maintenance

During normal use, no maintenance is required.

Handling and Installation

Installation in walls

1. Make good wall around plastic pipe with either ROCKWOOL Acoustic Intumescent Sealant or Firestop Compound.
2. Undo the toggle clip on the Firestop Pipe Collar and open it out.
3. Slide the Firestop Pipe Collar, with its fixing tabs pointing towards the face of the wall, around the plastic pipe.
4. Lock the Firestop Pipe Collar around the pipe closing the toggle clip. Push the Firestop Pipe Collar back on to the wall.
5. Fix the Firestop Pipe Collar to the wall by means of 32mm long steel self-tapping screws, through the fixing tabs.
6. Repeat for the other side of the wall if required.

Installation in floors

Make good floor around plastic pipe with either ROCKWOOL Acoustic Intumescent Sealant or Firestop Compound.

1. Undo the toggle clip on the Firestop Pipe Collar and open it out.
2. Slide the Firestop Pipe Collar, with its fixing tabs pointing up towards the face of the soffit, around the plastic pipe.
3. Lock the Firestop Pipe Collar around the pipe closing the toggle clip. Push the Firestop Pipe Collar back on to the soffit.
4. Fix the Firestop Pipe Collar to the soffit by means of 32mm long steel self-tapping screws, through the fixing tabs

Performance

ROCKWOOL Firestop Pipe Collars have been tested according to either BS476 Pt 20 or EN1366-3. The independently prepared assessment, detailing the full scope of fire performance, is available from the ROCKWOOL Technical Solutions Team.

ROCKWOOL Firestop Pipe Collars provide either up to 2 hours or up to 4 hours fire resistance integrity and insulation for PVC, HDPE, ABS, PE pipes up to a maximum 7mm wall thickness, for pipes from 55mm to 315mm.

The performance of the collar will be determined by the performance of the substrate, so should 2 hours be the requirement of the collar then the substrate should be rated to no less than the collar.

For advice on particular types and sizes of pipes or particular applications, please refer to our standard details pack available via www.rockwool.co.uk or contact the Technical Solutions Team on 01656 868490.

Table 1 - Performance in masonry supporting walls

Collar type	Maximum pipe O.D. (mm)	Maximum pipe wall thickness (mm)	Collar depth (mm)	Fire resistance (mins)	
				Integrity	Insulation
2 hour	55	7	60	120	120
	82	7	60	120	120
	110	7	60	120	120
	160	7	60	120	120
4 hour	55	7	60	240	240
	82	7	60	240	240
	110	7	60	240	240
	160	7	60	240	240

* For sizes not listed please contact our Technical Solutions Team to determine performance

Table 2 - Performance in plasterboard supporting walls

Collar type	Maximum pipe O.D. (mm)	Maximum pipe wall thickness (mm)	Collar depth (mm)	Fire resistance (mins)	
				Integrity	Insulation
2 hour	55	7	60	120	120
	82	7	60	120	120
	110	7	60	120	120
	160	7	60	120	120
4 hour	55	7	60	240	240
	82	7	60	240	240
	110	7	60	240	240
	160	7	60	240	240

Table 3 - Performance in concrete floors

Collar type	Maximum pipe O.D. (mm)	Maximum pipe wall thickness (mm)	Collar depth (mm)	Fire resistance (mins)	
				Integrity	Insulation
2 hour	55	7	60	120	120
	82	7	60	120	120
	110	7	60	120	120
	160	7	60	120	120
4 hour	55	7	60	240	240
	82	7	60	240	240
	110	7	60	240	240
	160	7	60	240	240

Table 4 - Sizes

Collar type	Maximum pipe O.D. (mm)	Maximum pipe wall thickness (mm)
30-32	171697	120
38-40	171700	120
55	128063	120
63	128064	120
82	128065	120
110	128060	120
125	128061	120
160	128062	120
200	139490	120
250	139465	120
315	190274	120
55	128069	240
63	128070	240
82	128071	240
110	128066	240
125	128067	240
160	128068	240

June 2017

ROCKWOOL Limited

Pencoed
Bridgend
CF35 6NY

Tel: 01656 862 621

info@rockwool.co.uk

rockwool.co.uk

