



FIREPRO® SoftSeal System

ROCKWOOL®

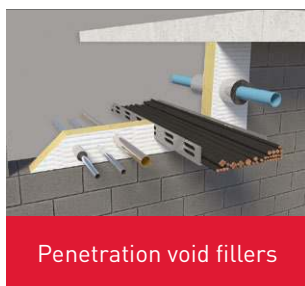


FIREPRO® Range

The ROCKWOOL FIREPRO® SoftSeal system is part of this comprehensive range of firestopping products, which ensure that the fire resistance of protected walls, floors and roofs is never compromised by services or voids.

To stop fire spreading, UK Building Regulations insist on effective compartmentation, where fire, smoke and gasses must be kept for as long as possible where they have originated. Our range of firestopping products ensure that cables, pipes, trunking, or ductwork, or the voids that they pass through, don't provide the weak link through which fire can spread.

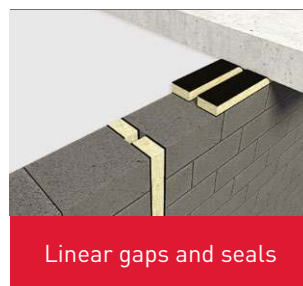
Applications



Penetration void fillers



Pipework and trunking



Linear gaps and seals



Sealant and coatings

Products



Ablative coated batt



Acoustic intumescent sealant



Firestop compound



Pipe collars



Pipe wraps



Insulated fire sleeves



Intumescent expansion joints



Intumescent pillows



Putty pads



Multi cable firestop



FIREPRO® glue



High expansion intumescent sealant

FIREPRO® SoftSeal System

Flexible firestopping for service and joint applications

The ROCKWOOL FIREPRO® SoftSeal System has been developed in response to demand from the market for a firestopping solution where high levels of movement in the building's services or joints need to be accommodated.

The FIREPRO® SoftSeal system can be utilised in two key applications, namely:



Penetration Seals



Linear Joint Seals

Advantages

- Suitable for penetration and linear joints
- Acoustically absorbent
- CE Marked
- Easy to handle and install
- Both vertical and horizontal joint applications
- Tested for durability to current EU guidelines
- Supplied pre-coated

FIREPRO® SoftSeal System

PENETRATION SEAL

Description

As part of the comprehensive ROCKWOOL FIREPRO® range of fire protection products, FIREPRO® SoftSeal System incorporates a product specifically designed to apply to penetration seals within buildings, where the design needs to accommodate movement in the services.

The FIREPRO® SoftSeal System can be installed into apertures within masonry or drywall partitions as a standalone seal for openings up to 1000mm x 1000mm or as part of a larger ROCKWOOL Ablative Coated Batt seal (2 layers) to accommodate movement of services.*

A FIREPRO® SoftSeal Coated Strip comprises a low density stone wool SoftSeal Lamella Strip, pre-coated with SoftSeal Flexible Coating.

The FIREPRO® SoftSeal Coated Strip is supplied in strips 1200mm x 200mm x 100mm.

The FIREPRO® SoftSeal flexible Coating is also available in 5L, 10L and 20L tubs to enable site repairs to FIREPRO® SoftSeal Coated Strips and FIREPRO® SoftSeal Linear Joint Seals, that may have been damaged during installation.

To complement the FIREPRO® SoftSeal Coated Strip, ROCKWOOL also supplies FIREPRO® SoftSeal High Expansion Intumescent Sealant (310ml) and FIREPRO® SoftSeal Flexible Acoustic Intumescent Sealant (310ml).

FIREPRO® SoftSeal Coated Strip is intended to reinstate the fire resistance, acoustic and air seal performances of concrete floors, masonry walls and dry wall systems when voids have been created for the passage of services. This includes pipes made of steel, cast iron, copper, polypropylene (PP), high density polythene (HDPE), PVC and ABS along with all sheathed cables up to 80mm and supported cable bundles up to 100mm.



Standards & Approvals

FIREPRO® SoftSeal has been tested and assessed to BS EN1366-3 2009 and classified to EN 13501-2.

FIREPRO® SoftSeal Coated Strip System has been CE marked against ETAG026-2.

*Higher levels of service movement may be able to be accommodated by installing the product under higher compression rates, please contact ROCKWOOL Technical Solutions for guidance.

FIREPRO® SoftSeal System

Performance

Fire Performance

ROCKWOOL FIREPRO® SoftSeal Coated Strip has been tested to the dedicated fire resistance standard for penetration seals BS EN1366-3 and shown to provide up to 2 hours fire performance (EI20).

Standard details, showing the full scope of fire performance, are available from the ROCKWOOL Technical Solutions Team on 01656 862621.

FIREPRO® SoftSeal Coated Strip fire resistance tests were conducted using FIREPRO® SoftSeal Flexible Acoustic Intumescent Sealant and/or FIREPRO® SoftSeal High Expansion Intumescent Sealant.

For vertical applications the FIREPRO® SoftSeal Coated Strips are coated on both sides.

Movement

As part of the testing to BS EN 1366-4, FIREPRO® SoftSeal was assessed for its movement capabilities, prior to conducting the fire test. The product was tested to accommodate movement (expansion and contraction) of +/-15%[†].

Acoustics

Tested to EN 10140 with results as below:

R_w :
30 dB when installed with 100mm thick SoftSeal Batt

$D_{n,e,w}$:
40 dB when installed with 100mm thick SoftSeal Batt

Water Permeability

Tested to EN 1027 – No leakage observed up to 300Pa.

Air Permeability

Tested to EN1026 up to 600Pa.
Leakage at 50Pa 0.1/1.4 m³/m²/h

Installation

- 1 Measure the height of the aperture to be sealed.
- 2 Cut the FIREPRO® SoftSeal Coated Strips 15% bigger than the height of the void to be filled, so when installed they are under compression.
- 3 Ensure substrate is clean and free of dust and debris.
- 4 Apply a bead of FIREPRO® SoftSeal Acoustic Intumescent Sealant around the internal edges of the aperture.
- 5 Install the FIREPRO® SoftSeal Coated Strips horizontally, so that the lamellas are running horizontally.
- 6 Apply a bead of FIREPRO® SoftSeal Acoustic Intumescent Sealant to butt joints between different sections of SoftSeal Coated Strip and around services.
- 7 FIREPRO® SoftSeal High Expansion Intumescent Sealant shall be used around plastic pipes in accordance with ROCKWOOL standard details.
- 8 Apply FIREPRO® SoftSeal Flexible Coating to the face of all joints between SoftSeal Coated Strip and substrate/Ablative Coated Batt.

N.B. Ensure adequate space above and below services to accommodate the FIREPRO® SoftSeal product, for the movement levels required.

[†]See ROCKWOOL standard details for specific Ablative Coated Batt sizes.

FIREPRO® SoftSeal System

LINEAR JOINT SEAL

Description

As part of the comprehensive FIREPRO® range of fire protection products, ROCKWOOL FIREPRO® SoftSeal System incorporates a product specifically designed to form a linear joint seal within buildings, where the design needs to accommodate movement in the joint.

It may be installed horizontally or vertically and is suitable for linear joint widths up to 300mm[§]. FIREPRO® SoftSeal Linear Joint Seal can also be used as a 'head-of-wall' barrier to extend the fire resistance and acoustic performances of masonry walls that finish at suspended ceiling height, up to the concrete soffit above. FIREPRO® SoftSeal Linear Joint Seal can be used in conjunction with ROCKWOOL Ablative Coated Batt for head-of-wall applications.

A FIREPRO® SoftSeal Linear Joint seal comprises a low density stone wool FIREPRO® SoftSeal batt, pre-coated with FIREPRO® SoftSeal Flexible Coating. Depending on the application. FIREPRO® SoftSeal Linear Joint Seal can be supplied on either one or both sides. (Single Sided for Horizontal Applications. Double sided for Vertical Applications).

The FIREPRO® SoftSeal Linear Joint Seal is supplied in strips 1200mm x 200mm x 100mm.

The FIREPRO® SoftSeal Flexible Coating is also available in 5L, 10L and 20L tubs to enable site repairs to FIREPRO® SoftSeal Coated Strips and FIREPRO® SoftSeal Linear Joint Seals, that may have been damaged during installation.



Standards & Approvals

FIREPRO® SoftSeal has been tested and assessed to BS EN1366-4: 2006 + A1: 2010 and classified to EN 13501-2.

FIREPRO® SoftSeal Linear Joint Seal system has been CE marked against ETAG026-3.

[§]Linear Joints over 300mm wide can be accommodated, with the addition of steel Z brackets. For further information and advice on sizes or particular applications, please contact Rockwool Technical Solutions Team on 01656 862621.

FIREPRO® SoftSeal System

Performance

Fire Performance

ROCKWOOL FIREPRO® SoftSeal Linear Joint Seal has been tested to the dedicated fire resistance standard for linear joint seals BS EN1366-4 and shown to provide up to 4 hours fire performance (E240 & EI80).

Movement

As part of the testing to BS EN 1366-4, FIREPRO® SoftSeal was assessed for its movement capabilities, prior to conducting the fire test. The product was tested to accommodate movement (expansion and contraction) of +/-25%.

Acoustics

Tested to EN 10140 with results based on two thicknesses as below:

R_w :

30 dB when installed with 100mm thick SoftSeal Batt

39 dB when installed with 200mm thick SoftSeal Batt

$D_{n,e,w}$:

40 dB when installed with 100mm thick SoftSeal Batt

49 dB when installed with 200mm thick SoftSeal Batt

Water Permeability

Tested to EN 1027 – No leakage observed up to 300Pa.

Air Permeability

Tested to EN1026 up to 600Pa.

Leakage at 50Pa 0.1/1.4 m³/m²/h

Installation

- 1 Measure the width of the Linear Joint to be sealed.
- 2 Cut the FIREPRO® SoftSeal Coated Strips 25% bigger than the joint width, so when installed they are under compression.
- 3 Ensure substrate is clean and free of dust and debris.
- 4 Install the FIREPRO® SoftSeal Linear Joint Seal with the coating on the top surface.
- 5 Apply FIREPRO® SoftSeal Flexible Coating to the face of all joints between the seal and the substrate, overlapping by 20mm.
- 6 Apply FIREPRO® SoftSeal Flexible Coating to the faces of all butt joints between pieces of Soft Seal Linear Joint Seal.

Technical advice

For further information relating to any aspect of the FIREPRO® SoftSeal system, or the FIREPRO® range, please contact:

ROCKWOOL Technical Solutions team
01656 862 621
info@rockwool.co.uk

www.rockwool.co.uk

 @RockwoolUK

 RockwoolUK

For installation videos please visit our web site.

ROCKWOOL Limited
Pencoed
Bridgend
CF35 6NY

info@rockwool.co.uk
www.rockwool.co.uk

ROCKWOOL®

ROCKWOOL Limited reserves the right to alter or amend the specification of products without notice as our policy is one of constant improvement. The information contained in this data sheet is believed to be correct at the date of publication.

Whilst ROCKWOOL will endeavour to keep its publications up to date, readers

will appreciate that between publications there may be pertinent changes in the law, or other developments affecting the accuracy of the information contained in this data sheet.

The above applications do not necessarily represent an exhaustive list of applications for FIREPRO® SoftSeal System. ROCKWOOL Limited

does not accept responsibility for the consequences of using FIREPRO® SoftSeal System in applications different from those described within this data sheet. Expert advice should be sought where such different applications are contemplated, or where the extent of any listed application is in doubt.

CREATE AND PROTECT®